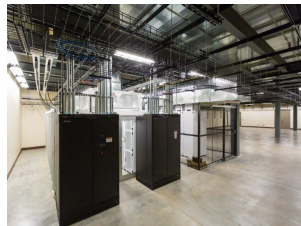


Columbia 1 Data Center



Opened in 2016 - Tier III Design

Bend is ideally located to serve as a primary data center for communities throughout the Pacific Northwest and Northern California. The facility also offers a business recovery location for metropolitan areas requiring geographic diversity.

The Bend data center is built to Tier III standards, meeting the highest quality requirements. It is directly located on major fiber routes giving it optimal connectivity. The facility is carrier-neutral with diverse fiber connections to regional and national carriers.

COIX (Central Oregon Internet Exchange) and 7 Fiber Networks are located at the site, providing diversity and reach.

Bend is a city that is a destination vacation community, known for its scenic beauty, outdoor recreation, and craft breweries. Bend is very seismically stable and is outside of the 100 year flood plain. Bend has one of the lowest risks of natural disasters in the country and enjoys moderate weather and temperatures.

Facility Specifications

- Unique pod site design, with Expansion
- 13,000 sq ft buildings
- Flexible white space
- 7,000 sq ft data hall
- True A and B 2N Redundant power systems
- Redundant N+1 cooling systems
- Optimized for high power density
- Diverse fiber infrastructure

Access and Security

- Multiple phase access authorization
- Bio-metric verification security scanners
- 24 x 7 security monitoring
- Onsite security enforcement

Power Generation

- 3MW Pacific Power service
- 2N diesel generators
- Substantial onsite fuel storage
- Refueling contract

Power Systems

- Ultra efficient UPS and power distribution systems
- 2N True A and B configuration
- Overhead A & B Starline bus service
- 120V and 208V service
- 15A, 20A, & 30A circuits

Cooling

- Ultra-efficient indirect evaporative cooling
- N+1 configuration
- Supports high power densities (up to 30kW per Cabinet)

